

1949 - 1954 Chevy Passenger Car Rear Leaf Spring Installation Instructions

1-855-693-1259 - www.totalcostinvolved.com

Read and understand these instructions before starting any work!

**CHECK ALL PARTS INCLUDED IN THIS KIT TO THE PARTS LIST BEFORE INSTALLATION.
IF ANY PIECES ARE MISSING, PLEASE CONTACT: TOTAL COST INVOLVED 855-693-1259**



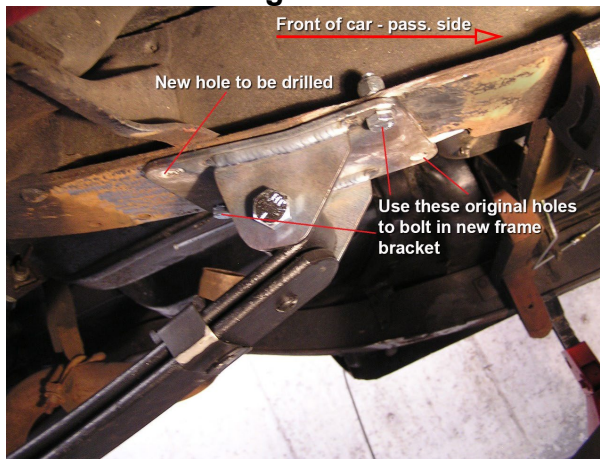
Note: These instructions are for the replacement of the existing factory rear leaf spring suspension. Read through all of the instructions before beginning the installation.

Place the vehicle on a hard level surface & use an appropriate jack & jack stands to raise the vehicle off the ground.

Remove the rear wheel, rear axle assembly, and the existing rear leaf spring suspension.

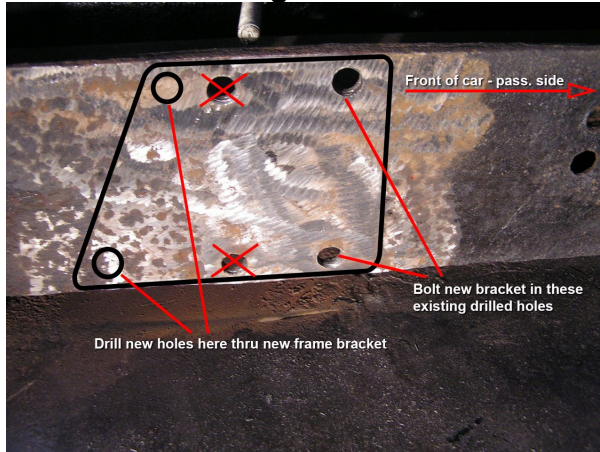
Remove the rivets from the front and rear leaf spring hanger brackets on the frame. Use a grinder to grind down the heads of the rivets, then use a hammer and chisel to tap them out.

Figure 1



Install the new front leaf spring hangers. (*Note: There is a left and right front hanger.) Place the brackets on the frame as shown. Three holes will line up and you will need to drill one. When the brackets are placed correctly, the tabs to hold the spring should be to the rear of the vehicle. **(See Figure 1)**

Figure2



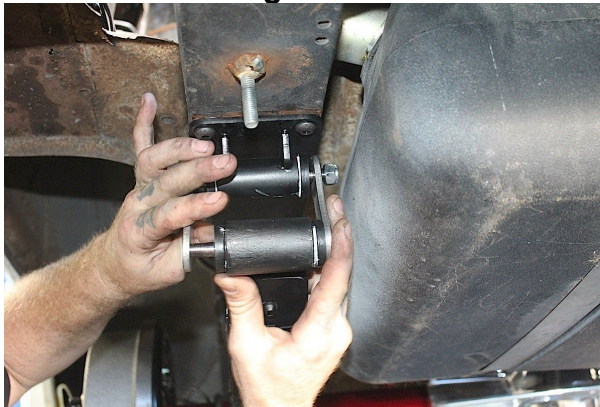
Install the new rear leaf spring hangers. Line up the front holes in the bracket with the rivet holes in the frame. You will need to drill the 2 additional holes for the rear of the bracket. **(See Figure 2)**

Figure 3



Install the new leaf springs. The leaf spring should be positioned with the pressed-in bushing in the front hangers (toward the front of the vehicle). The empty spring eye will take the shackle bushing and attach to the rear hangers with the shackles. **(See Figure 3)**

Figure 4



Assemble & install the shackles. Apply the provided urethane grease to the inside diameter of the bushings. Slide them into the rear spring hanger and spring eye. Next, install the shackle bolts and dog bone plates. **(See Figure 4)**

Figure 5



Set the spring perches on the centering pins on the leaf springs. Then set the rear axle assembly housing in place, centering the housing from side to side accounting for wheel position in the fender wells. Check the pinion angle. The pinion angle should be 3 degrees up. Adjust the pinion angle and side-to-side position of the rear axle assembly until it is properly aligned. When the rear axle assembly is properly aligned tack weld the axle pads to the rear axle assembly housing. *Note: Leaf spring pads are center to center at 43" (See Figure 5)

Figure 6



Install the U-bolt and 5-hole plates positioned so that the shock mounting tabs are to the front of the axle assembly housing and toward the center of the vehicle. Tighten all nuts on the U-bolts. (We recommend a torque of 60 lbs. /ft.) (See Figure 6)

Figure 7



Next install the shocks in the stock upper location. Then install the special lower shock mount bolt into the tab on the U-bolt 5-hole plate. Now bolt the lower shock eye onto the lower shock mount. (See Figure 7)

This completes your installation.

**Thank you for purchasing a TCI Product. If you have any questions, please call
1-855-693-1259
or visit www.totalcostinvolved.com.**