



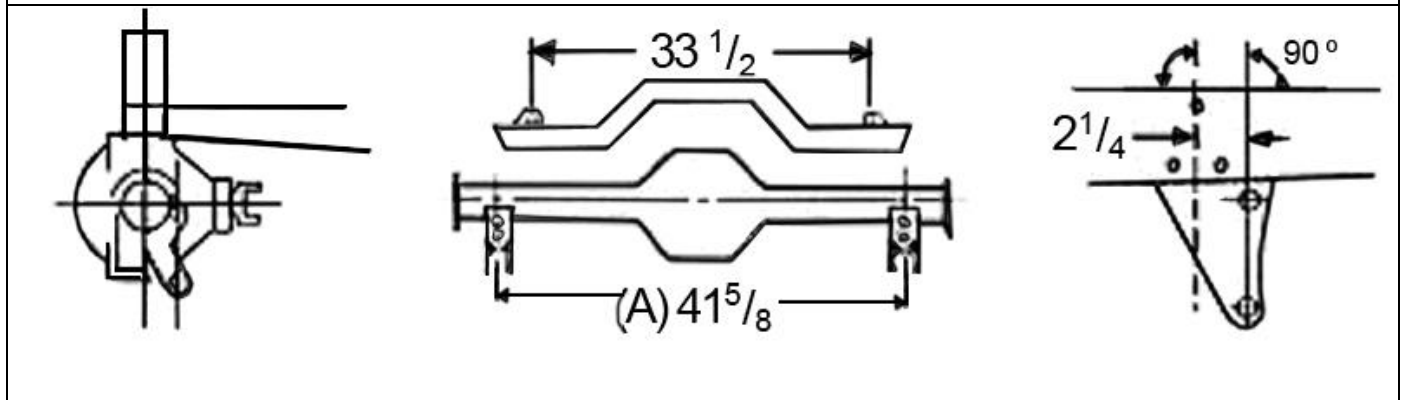
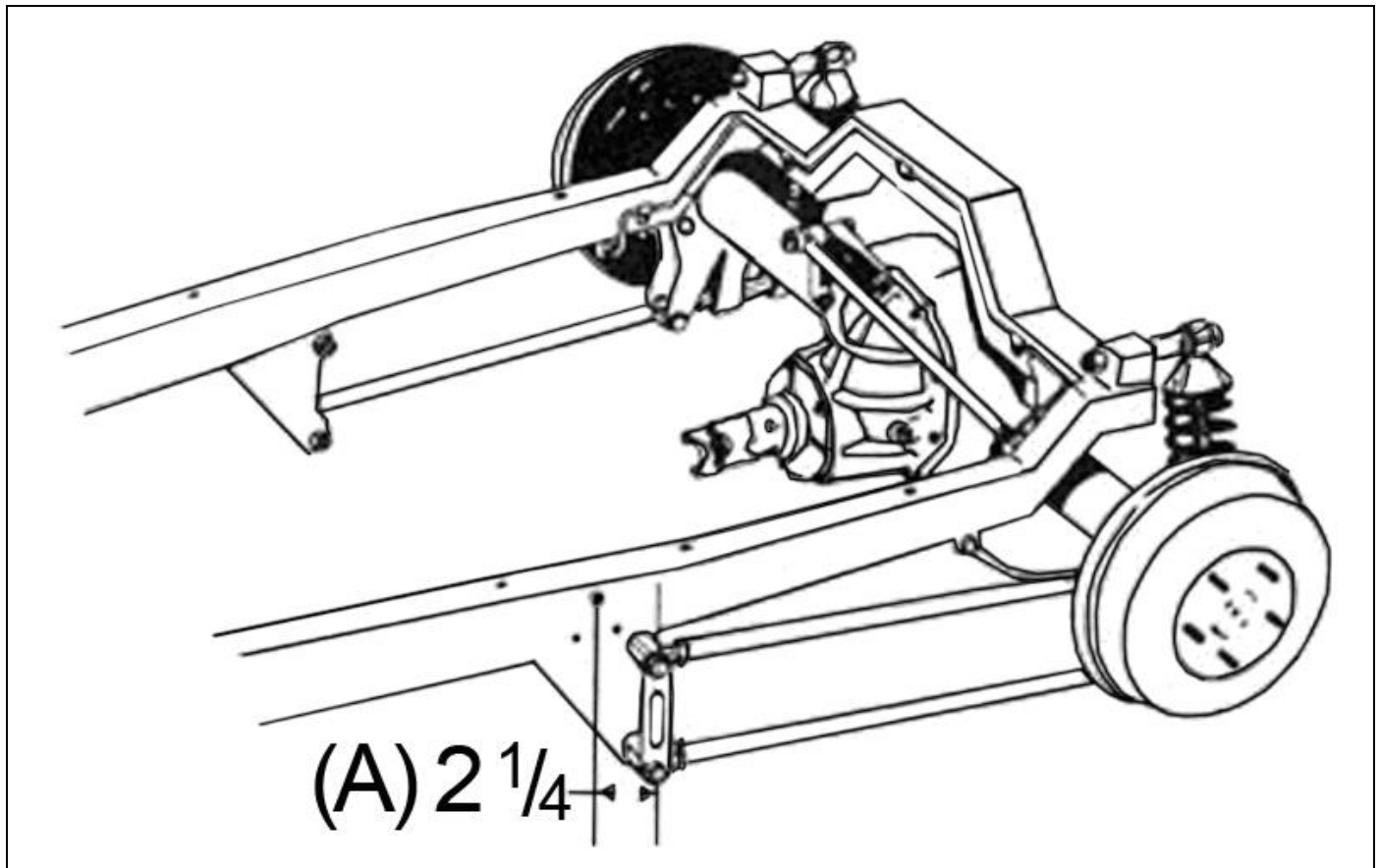
1928 – 1932 Ford Parallel 4-Link

Install Sheet

1-855-693-1259

www.totalcostinvolved.com

**CHECK ALL PARTS INCLUDED IN THIS KIT TO THE PARTS LIST BEFORE INSTALLATION.
IF ANY PIECES ARE MISSING, PLEASE CONTACT: TOTAL COST INVOLVED 1-855-693-1259**



1928-1932 PARALLEL 4-LINK
 Frame should be boxed at least 4" on either side of the front frame bracket mounting area.

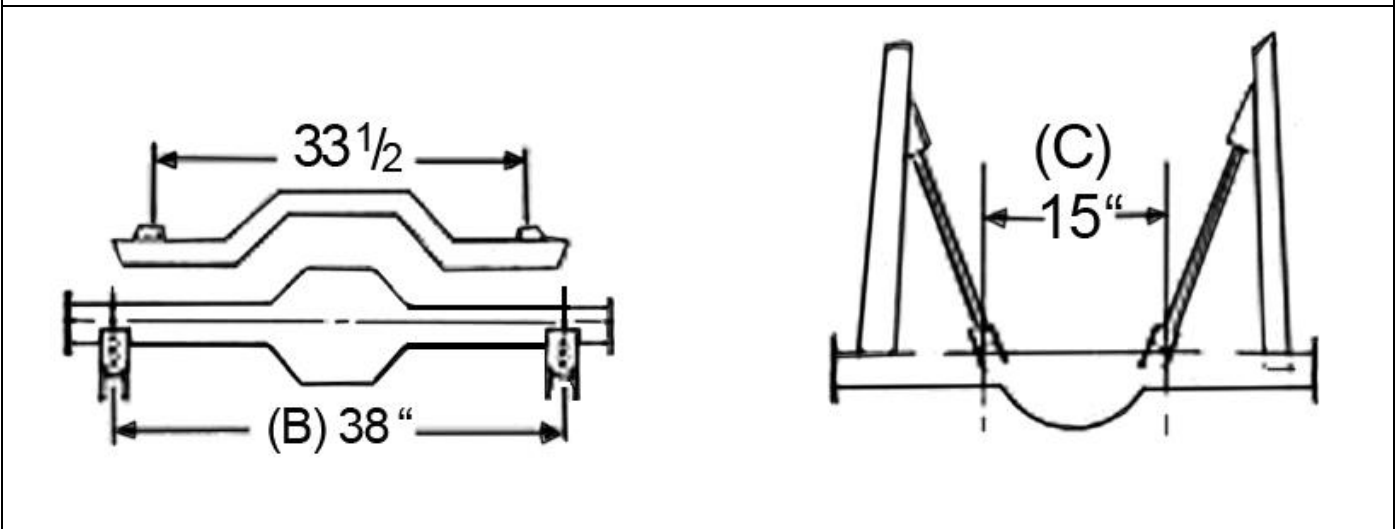
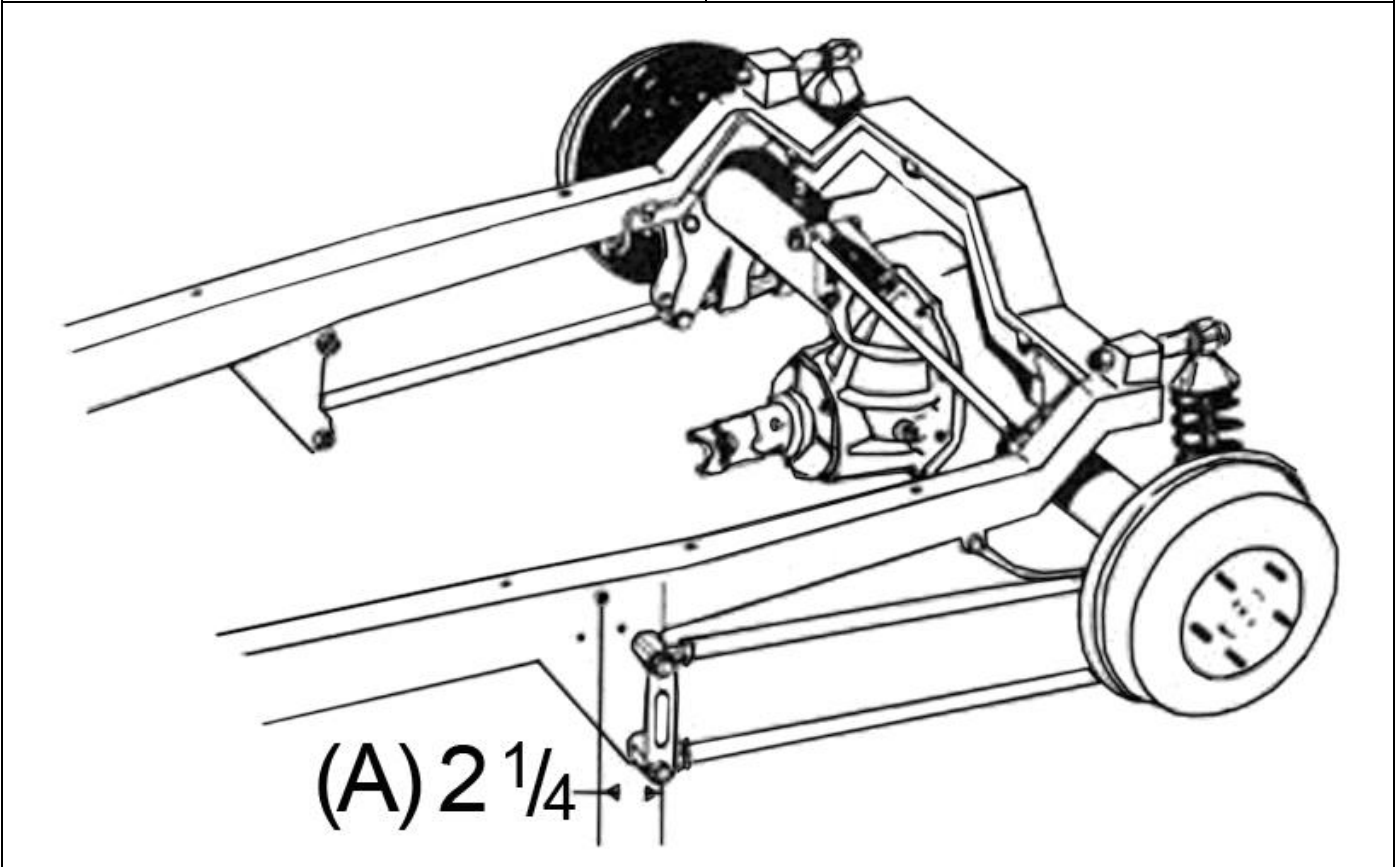
Brackets should be tack welded and the assembly should be checked for square and alignment before final welding.

Note: All welding should be performed by a qualified welder. - Kit is shown installed on our Model 'A' chassis with tubular cross member and kick-up. All measurements also apply to stock Model 'A' chassis. Coil-over shocks and mounting hardware are optional.

A. Center of holes in front frame bracket are located 2-1/4" behind the center of the top running board bracket mounting hole. Bracket is mounted flush with bottom of frame.

B. Rear axle brackets are located 41-5/8" apart measured from center to center at the coil-over mounting holes. Make sure that both brackets are the same distance from the end of the axle housing. Position the front face of the axle housing parallel to the back face of the axle brackets. Bars are assembled with adjusters at front.

1928-1932 Triangulated 4-Link

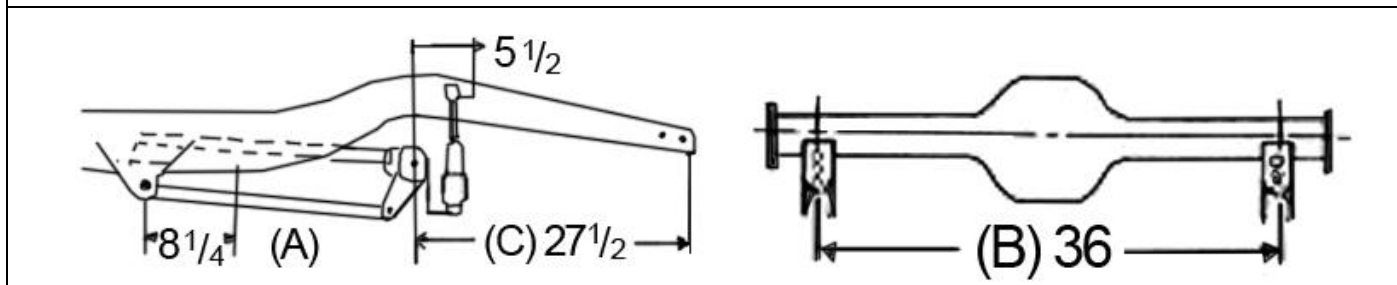
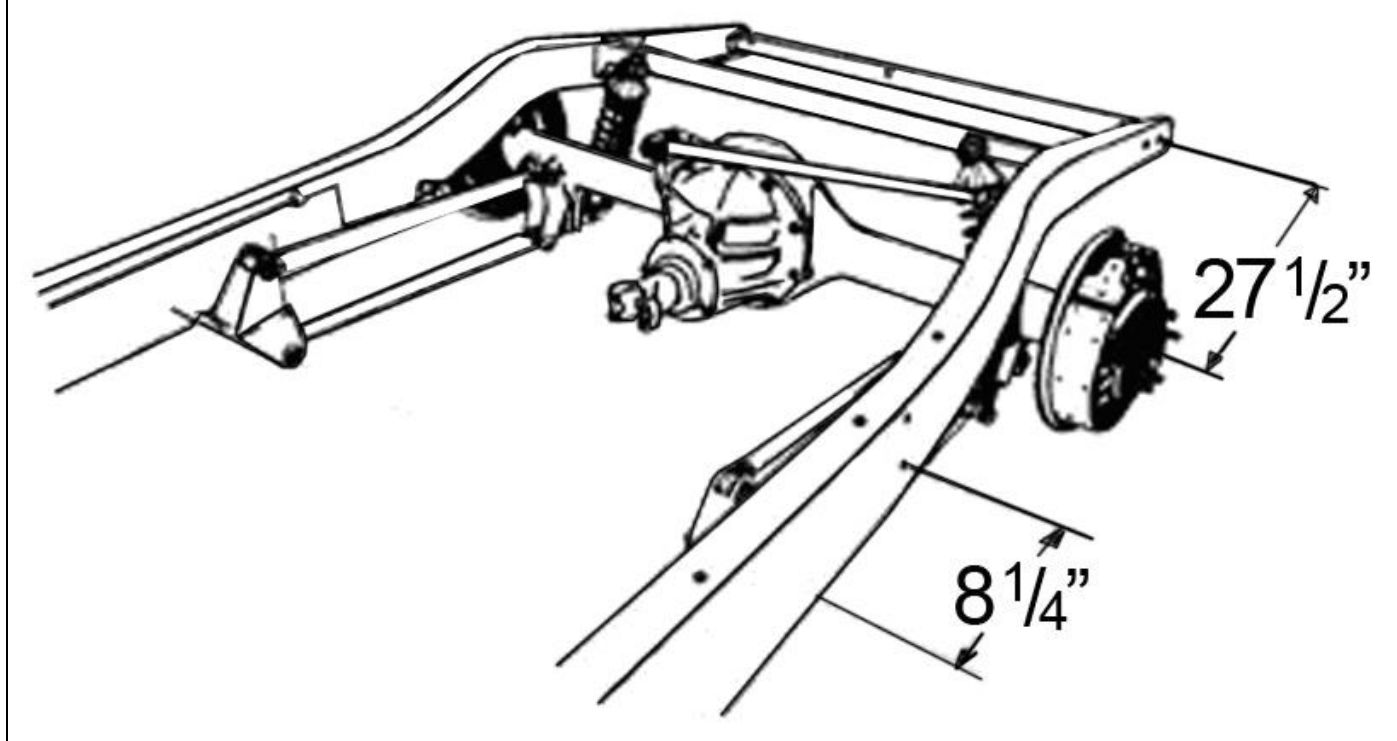


1928-1932 Triangulated 4-Link
 Frame should be boxed at least 4" on either side of the front frame bracket mounting area.

A. Center of hole in front frame bracket is located 2-1/4" behind the center of the top running board bracket mounting hole. Bracket is mounted flush with bottom of frame.

<p>Brackets should be tack welded and the assembly should be checked for square and alignment before final welding. Note: All welding should be performed by a qualified welder. - Kit is shown installed on our Model 'A' chassis with tubular cross member and kick-up. All measurements also apply to stock Model 'A' chassis. Coil-over shocks and mounting hardware are optional.</p>	<p>B. Rear axle brackets are located 38" apart measured from center to center at the coil-over mounting holes. Make sure that both brackets are the same distance from the end of the axis housing. Position the front face of the axle housing parallel to the back face of the axle brackets. Bars are assembled with adjusters at front.</p>
	<p>C. Install angle brackets on adjuster end of short bar and housing tabs on opposite end. Housing tabs are located 15" from center to center. Angle brackets may require slight trimming for correct fit. Check for floor pan clearance before final welding.</p>

1932 Parallel 4-Link



1932 Parallel 4-Link

Frame should be boxed at least 4" on either side of the front frame bracket mounting area.

A. Center of lower bolt hole on front bracket is located 8-1/4" forward from the center of the lower fender mounting hole. Frame bracket is positioned on inside of boxed frame rail flush with the bottom with the ears facing up. Frame brackets may need slight trimming to fit flush.

B. Rear axis brackets are located 36" apart measured from center to center at the coil-over mounting holes. Make sure that both brackets are the same distance from the and of the axle housing. Position the front face of the axis housing parallel to the back face of the axle brackets.