



# 1955-1959 Chevy Truck Rear Leaf Spring Kit

## Install Instructions

Tech Line: 1-855-693-1259

[www.totalcostinvolved.com](http://www.totalcostinvolved.com)

**Read and understand these instructions before starting any work!**

**USE THE PARTS LIST BELOW TO MAKE SURE YOUR KIT IS COMPLETE BEFORE INSTALLATION.  
IF ANY PIECES ARE MISSING, PLEASE CONTACT: Total Cost Involved Engineering 855-693-1259**

### Parts List:

- |     |                         |         |                     |
|-----|-------------------------|---------|---------------------|
| (2) | 35-48 leaf springs      | (28)    | 3/8-24x1 1/4" bolts |
| (2) | leaf spring brackets    | (28)    | 3/8-24 nylock nuts  |
| (2) | shackle brackets        | (30)    | 3/8" flat washers   |
| (4) | 35-48 shackle dog bones | (10-12) | 7/16-20 nylock nuts |
| (4) | shackle pins            | (2)     | 7/16-20x4" bolts    |
| (8) | shackle bushings        | (4-6)   | 7/16" flat washers  |
| (3) | u-bolts                 | (2)     | 1/2 -20x4" bolts    |
| (2) | 5-hole plates           | (2-12)  | 1/2 -20 nylock nuts |
| (2) | spring pads             | (0-2)   | 1/2" flat washers   |
| (2) | shocks                  | (2)     | shock studs         |
| (2) | shock brackets          |         |                     |



**\*NOTE\*** Before removing the stock leaf springs, mark the frame and take measurement as to where the stock axle centerline was. The frame needs to be at the typical 2 degrees rake to mimic actual ride height. Keep the frame at this rake throughout the installation.

**\*NOTE\*** While it may be possible to install this kit without removing the bed, it is recommended that you do so, as

it is much easier. Support the front and rear of the chassis on jack stands. Remove the rear axle, springs, rearend, brake lines, drive shaft, brackets etc.



To remove the rivets holding the brackets, grind the rivet heads flush. Center punch the rivet and drill through using progressively larger drills up to a 5/16" drill. Take care not to drill the original rivet holes larger or off center, as you will be locating your new brackets with these holes.



**\*NOTE\*** Passenger side shown  
Install the leaf spring brackets in the same manner as the originals by bolting them onto the outside and bottom of the rail. We will be reusing the original spring bracket holes. The brackets mount with the leaf spring hole facing toward the rear. It may be necessary to align drill a couple of these holes. Use the bracket as a template for drilling any remaining holes on the frame

Fasten the brackets to the original holes on the frame using the provided 3/8-24x1 1/4" bolts, nylock nuts, and one washer under each nut.

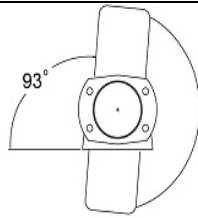
**\*NOTE\*** There are 7 bolts holding each bracket on.



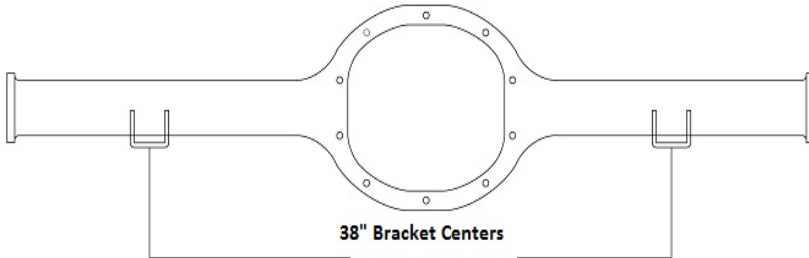
**\*NOTE\*** Passenger side shown  
Install the shackle brackets in the same manner as the originals by bolting them onto the outside and bottom of the rail. We will be reusing the original shackle bracket holes. It may be necessary to align drill a couple of these holes. Use the bracket as a template for drilling any remaining holes on the frame

Fasten the brackets to the original holes on the frame using the provided 3/8-24x1 1/4" bolts, nylock nuts, and one washer under each nut.

**\*NOTE\*** There are 5 bolts holding each bracket on.



ROTATE PINION 3 DEGREES UP  
USING SPRING PAD AS 0 DEGREE REFERENCE

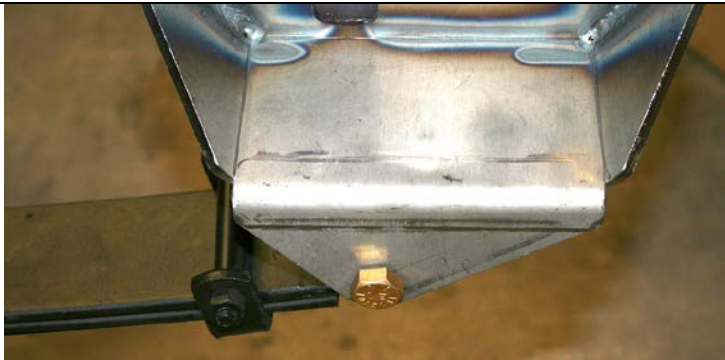


38" Bracket Centers

The leaf springs center to center measurement is 38". Make sure that both leaf pads are the same distance from the axle flanges on each side so the housing is centered. The pinion angle should be 5 degrees up.

**\*NOTE\***

Put the rearend onto a floor jack and roll it into position. Raise it up to the frame and keep it out of the way of the springs.

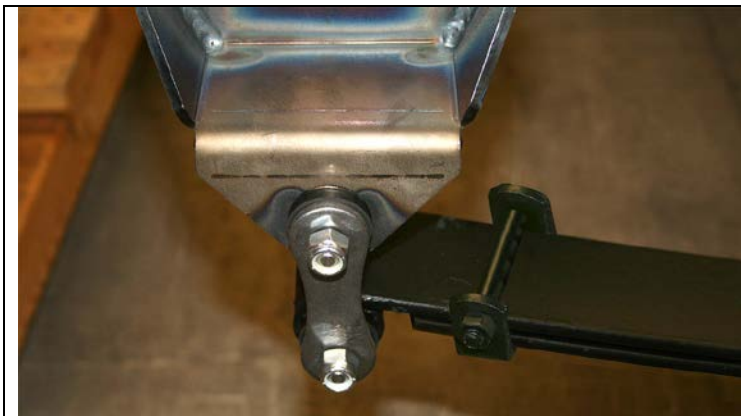


Use the 1/2-20x4 bolts and nylock nuts to fasten the front of the leaf spring into the front frame brackets. Go ahead and tighten these down.



Place the shackle bushings into the rear spring eyes. Slide the shackle pins through the bushings. Place the dog-bones onto the shackle pins and install the nylocks.

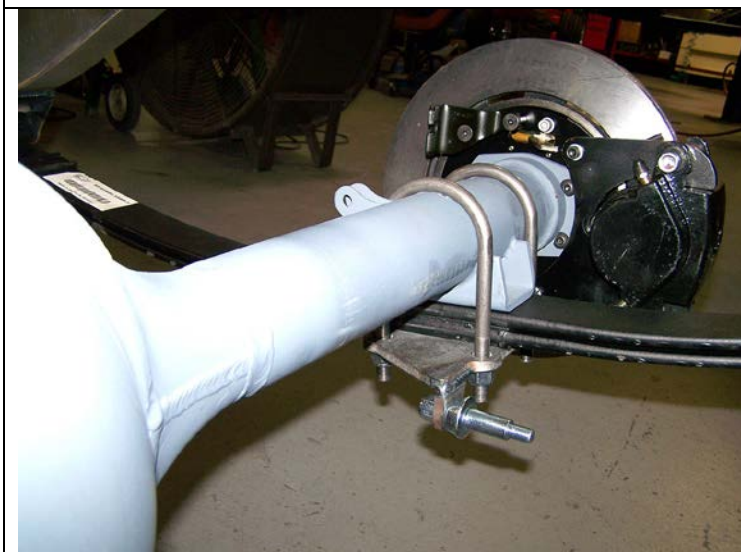
Leave loose for now



Place the shackle bushings into the shackle brackets.

Raise the rear of the leaf springs up into place and attach them to the shackle brackets using the shackle dog-bones and nylock nuts.

Tighten down the nylocks on each dog-bone.



Drop the rearend down onto the top of the leaf springs. Align the hole on the leaf pads onto the stud on the top of the leaf springs.

**\*NOTE\*** Passenger side shown

Clamp the rearend to the leaf springs using the U-bolts, 5-hole plates, and 1/2-20 nylock nuts. The 5-hole plates are positioned under the spring with the shock tabs pointing down on the inboard side and behind the axle. Tighten down the u-bolts

The new shock brackets mount outboard of the original shock brackets. Drill 7/16" holes 3.5" outboard of the upper rivet of the original shock bracket and 1 1/8" below the top edge. Bolt the top hole of the brackets and the shocks onto the cross member. Use 7/16"-20x4 bolts, nylock nuts, and washers under the bolt heads and nuts. Set the bottom edge of the brackets parallel to the cross member and drill the 3/8" holes using the bracket as guide. Bolt in place using the remaining 3/8"-24x1 1/4" bolts, nylock nuts and washers.



Fasten the shock studs to the 5-holes plate with 1/2-20 nylock and washers. Attach the shocks and fasten with the provided nylocks, stainless steel cupped washers and flat washers.

**\*NOTE\***

Reinstall the driveshaft, brake lines, wheels etc and drop the vehicle down onto its full weight. Double check all

hardware and enjoy.

**Replacement Parts:**

Shocks = Monroe Part # 33121 (2 needed)

Shackle Bushings = Energy Suspension Part# 2866.01 (8 needed)

No returns or exchanges without a RMA#.

Packages must be inspected upon receipt & be reported within 10 days.

If you are missing parts from your kit, TCI Engineering will send the missing parts via FedEx or U.S. mail ground.

Returned packages are subject to inspection before replacement/refund is given.(Some items will be subject to a 15% restocking fee)

Thank you for your business!